



ASPRINT

International Standard

Size	A series		B series		C Series	
	mm x mm	in x in	mm x mm	in x in	mm x mm	in x in
0	841 × 1189	33.1 × 46.8	1000 × 1414	39.4 × 55.7	917 × 1297	36.1 × 51.1
1	594 × 841	23.4 × 33.1	707 × 1000	27.8 × 39.4	648 × 917	25.5 × 36.1
2	420 × 594	16.5 × 23.4	500 × 707	19.7 × 27.8	458 × 648	18.0 × 25.5
3	297 × 420	11.7 × 16.5	353 × 500	13.9 × 19.7	324 × 458	12.8 × 18.0
4	210 × 297	8.3 × 11.7	250 × 353	9.8 × 13.9	229 × 324	9.0 × 12.8
5	148 × 210	5.8 × 8.3	176 × 250	6.9 × 9.8	162 × 229	6.4 × 9.0
6	105 × 148	4.1 × 5.8	125 × 176	4.9 × 6.9	114 × 162	4.5 × 6.4
7	74 × 105	2.9 × 4.1	88 × 125	3.5 × 4.9	81 × 114	3.2 × 4.5
8	52 × 74	2.0 × 2.9	62 × 88	2.4 × 3.5	57 × 81	2.2 × 3.2
9	37 × 52	1.5 × 2.0	44 × 62	1.7 × 2.4	40 × 57	1.6 × 2.2
10	26 × 37	1.0 × 1.5	31 × 44	1.2 × 1.7	28 × 40	1.1 × 1.6





ASPRINT

envelope size guide

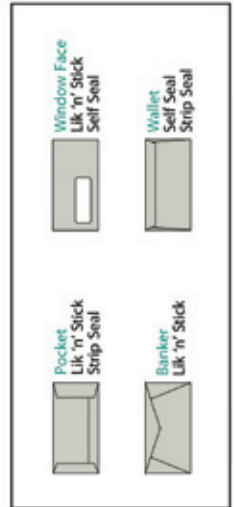
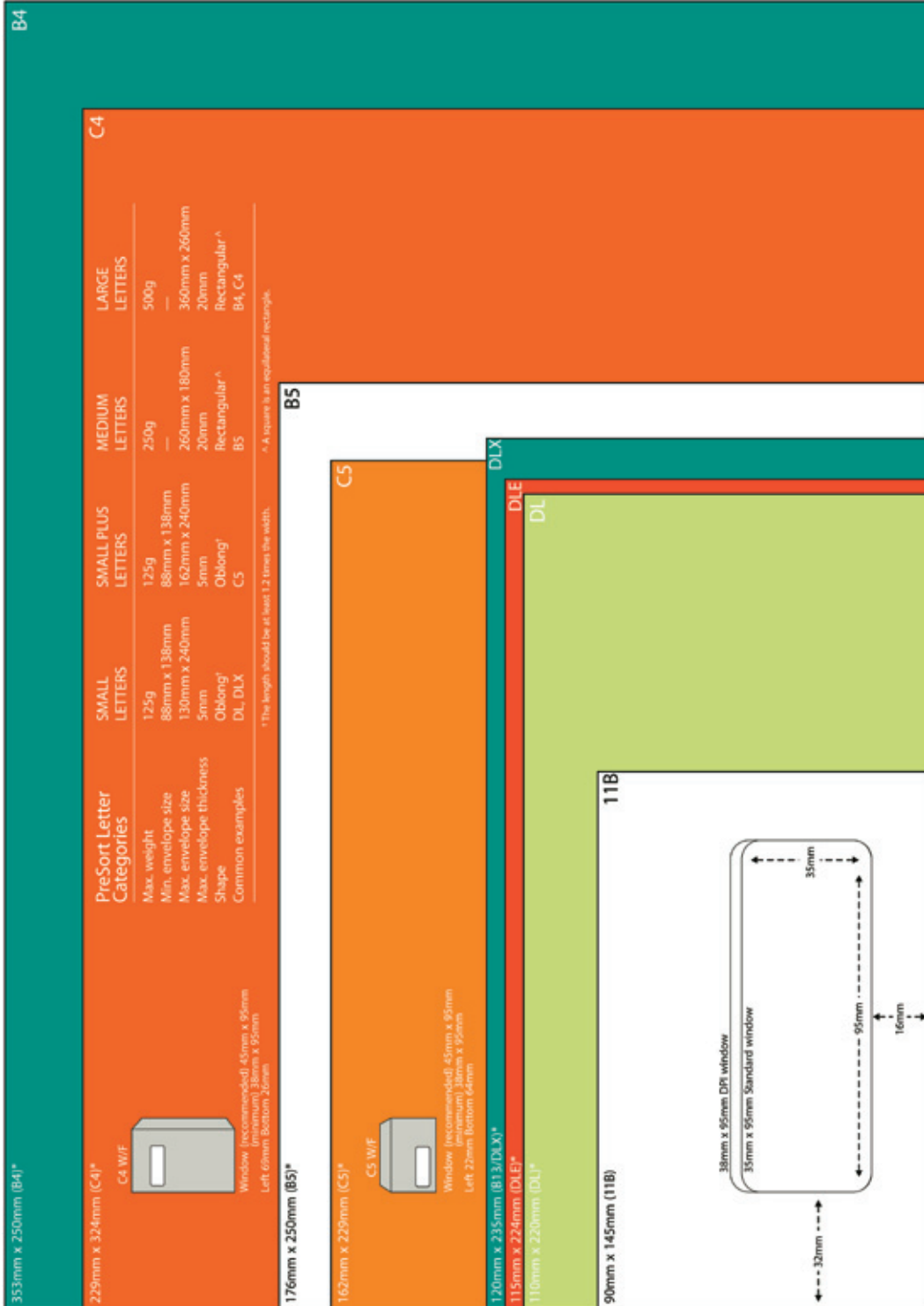
Envelope Terms

- Lik 'n' Stick**
Moisten flap to seal, used for machine insertion and maximum security.
- StripSeal**
Lift flap, peel and press gummed surface together to seal, used for hand insertion.
- Wallet**
Squared flap self seal envelope opening on long side.
- Pocket**
End opening lick seal or strip seal opens on short side.
- Plain**
Non window envelope, also called full face or correspondence envelope.
- Banker**
Vee flap lick seal envelope opening on long side.
- Secretive**
Security pattern inside envelope to prevent see through. Secretive is standard in window face but not usual in plain face. Security patterns may be customised to suit your requirements.

Standard Sizes

Banker & Wallet

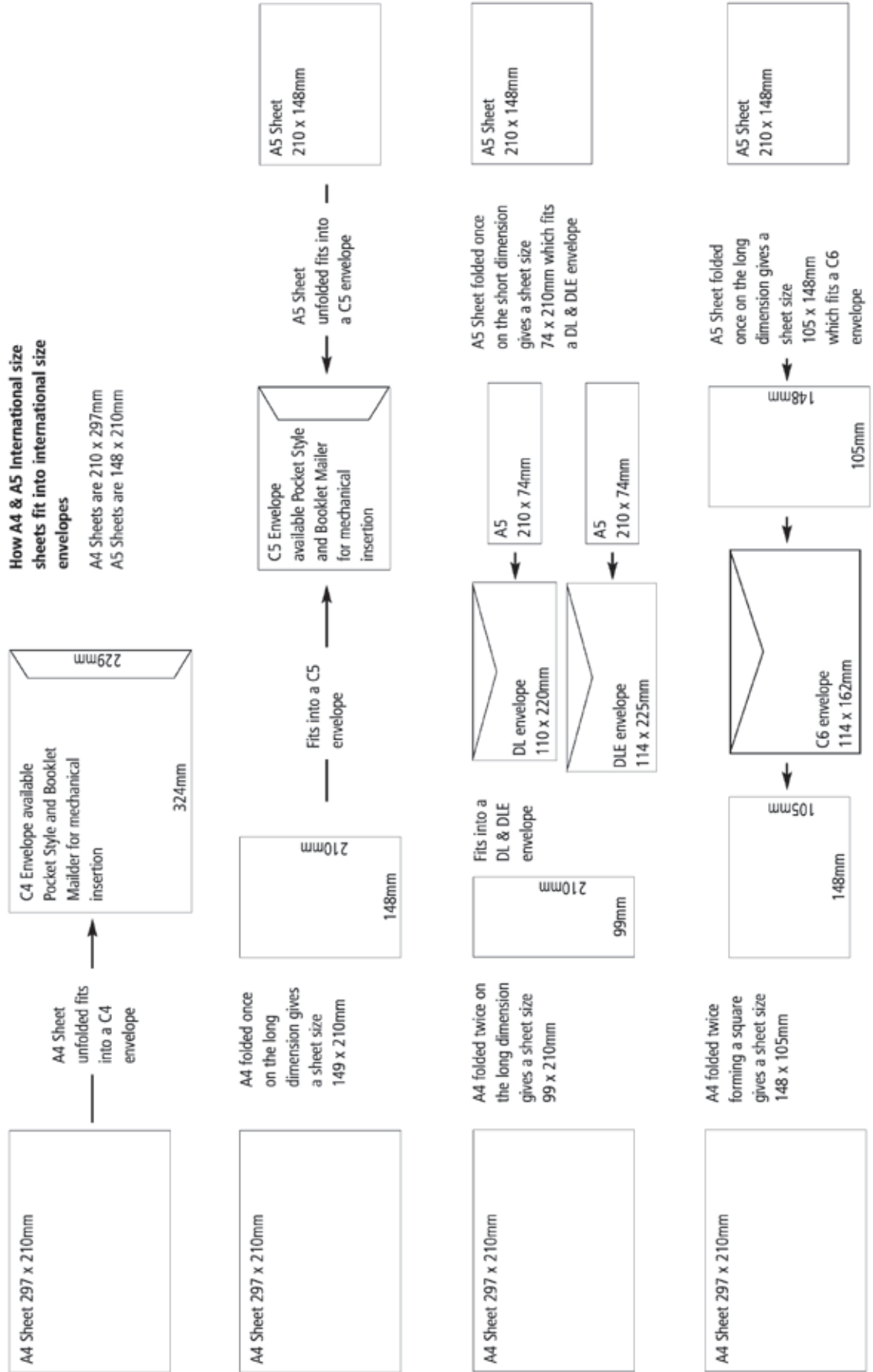
- 90mm x 145mm (11B)
- 92mm x 165mm (12¼)
- 100mm x 230mm (Cheque)
- 110mm x 220mm (DL)
- 110mm x 162mm (C6)
- 114mm x 225mm (DLE)
- 120mm x 235mm (DLX)
- 125mm x 324mm (B6)
- 162mm x 229mm (C5)
- 176mm x 250mm (B5)
- 229mm x 324mm (C4)
- 250mm x 353mm (B4)





ASPRINT

envelope size guide

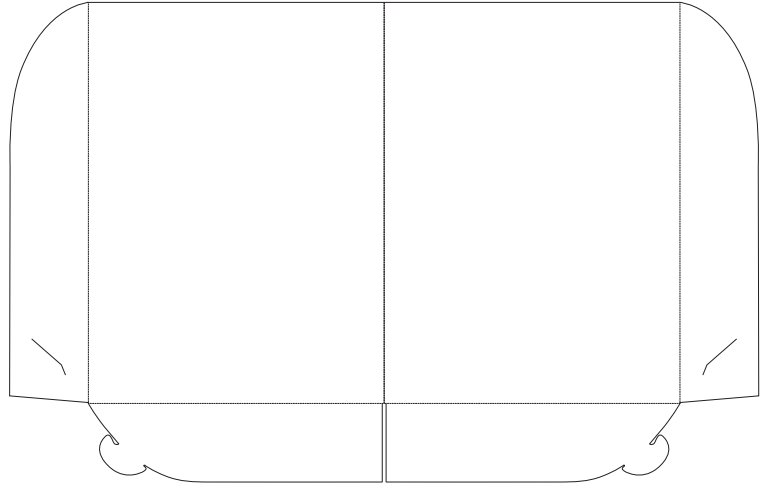




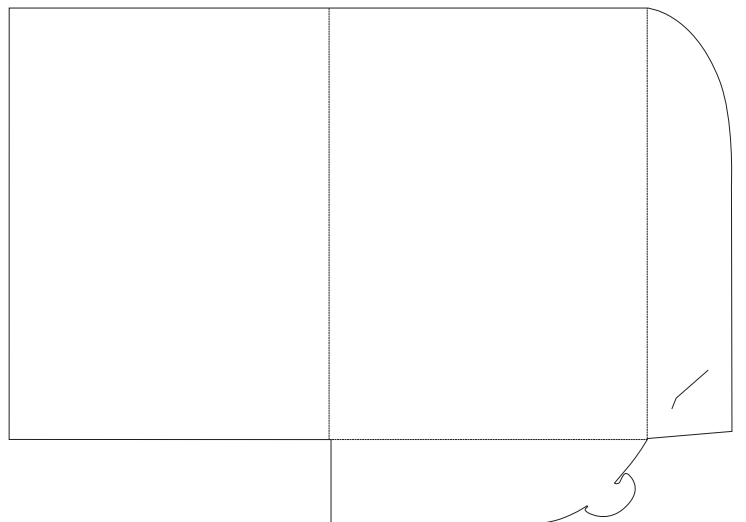
ASPRINT

presentation folders

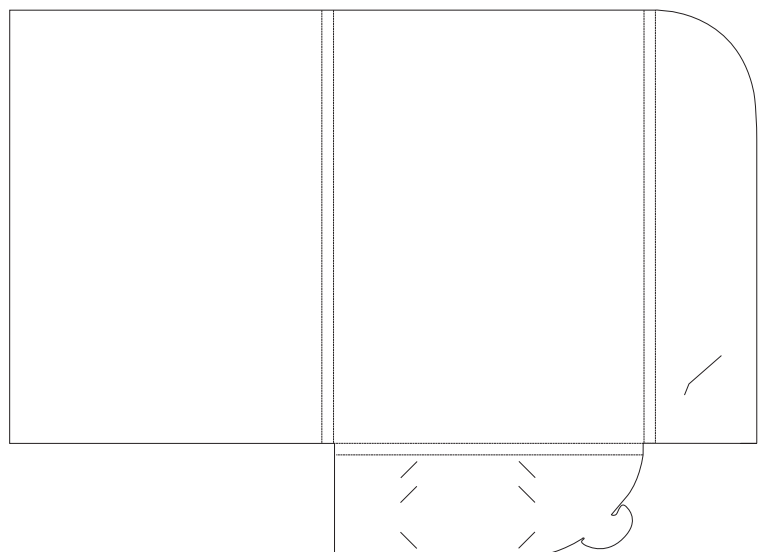
Zip 2 pocket A4
with or without
90x55 business card slot



Zip 1 pocket A4
with or without
90x55 business card slot



Zip 1 pocket A4 extra
with choice of business card slots:
standard 90x55 mm
small 90x40 mm
on this folder only



Templates are available to set up your own artwork.

Artwork charges based on basic typesetting and layout only, additional charges apply for further design work.

Printed on Zip Smooth Finish 250gsm white board. Specialty stocks and finishes subject to quotation.